



TRADITION OF BUILDING **EXCELLENCE**

[www.arbormeadowsct.com](http://www.arbormeadowsct.com) 203.265.1821



## THE WILLOW

### PROPERTY DETAILS:

**2,423**  
SQUARE FEET

**3**  
BEDROOMS

**2.1**  
BATHROOMS

**2**  
CAR GARAGE

FIRST FLOOR MASTER

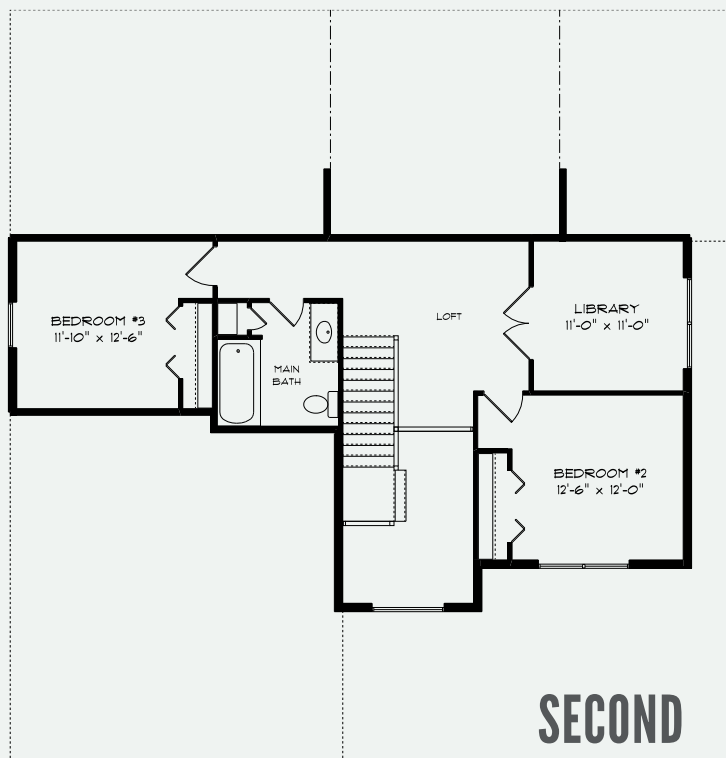
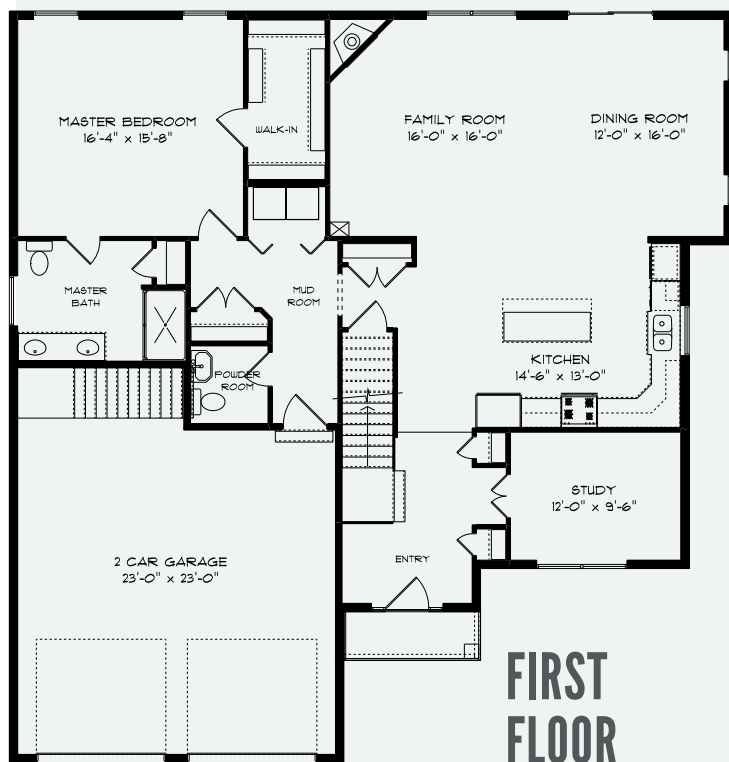
**Calcagni**  
REAL ESTATE



Artist's Rendering. The rendering/floor plans may not reflect the exact features or dimensions of your home. All dimensions are approximate and subject to change. Please consult with our Sales Representative for details.

## THE WILLOW FLOOR PLANS

- First floor master suite
- Oversized tiled shower in master bath
- Walk-in closet
- Two additional bedrooms on second floor
- Custom designer crafted cabinetry
- Granite countertops and tiled backsplash
- Large center island
- Hardwood floors
- 9 ft. ceilings on first floor
- Stainless steel appliance packages
- Study/den on first floor
- First floor laundry
- 2-car garage with key pad entry
- Gas fireplace
- Optional cathedral ceiling with dramatic second floor balcony
- Garage to basement stairway



**Calcagni**  
REAL ESTATE



Artist's Rendering. The rendering/floor plans may not reflect the exact features or dimensions of your home. All dimensions are approximate and subject to change. Please consult with our Sales Representative for details.