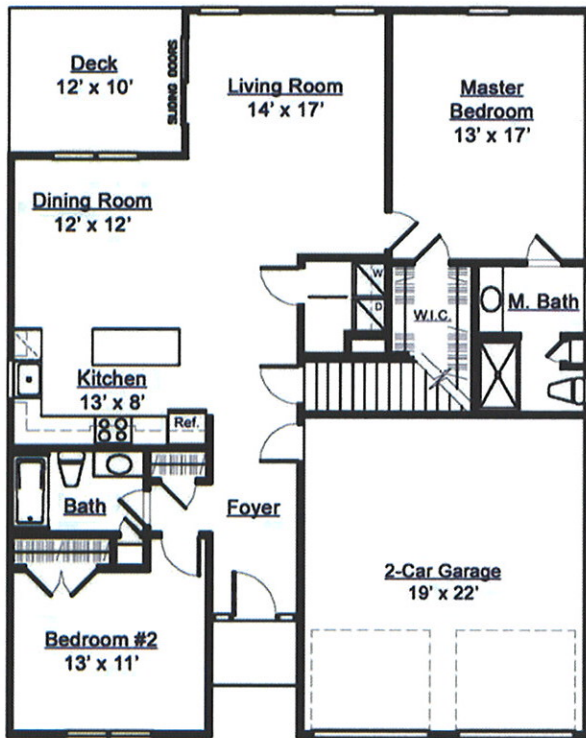




**Route 69 to Potuccos Ring Road
Wolcott, CT**

**Project Managers: Doreen DuChette ext. 319 and Irma Nesson ext. 312
Phone: 203-272-1821**



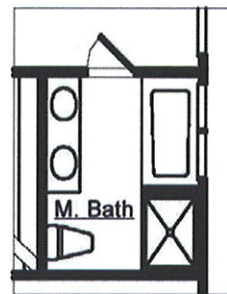


HAMPSHIRE GLENN

an active adult community

CARTER MODEL

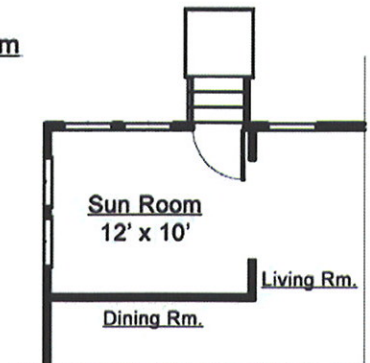
First Floor	1396 Sq. Ft.
Total	1396 Sq. Ft.



* **Optional Master Bathroom**

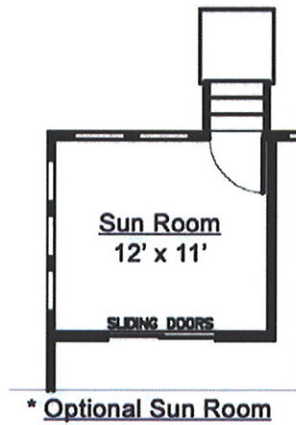
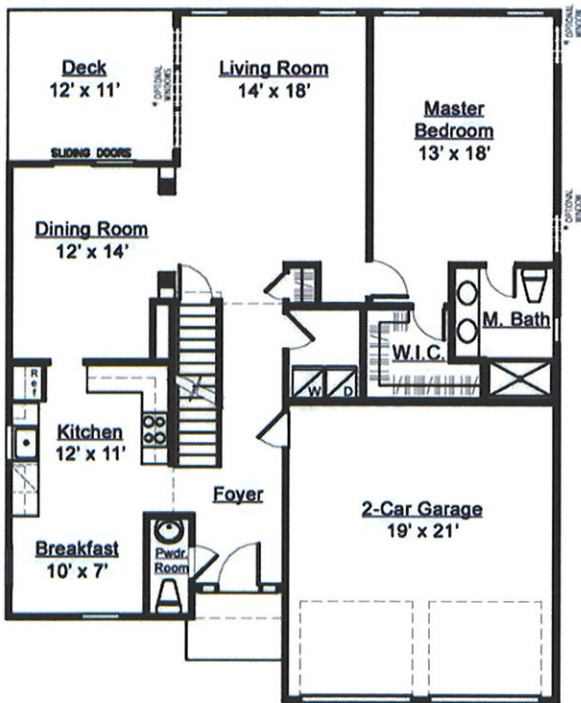
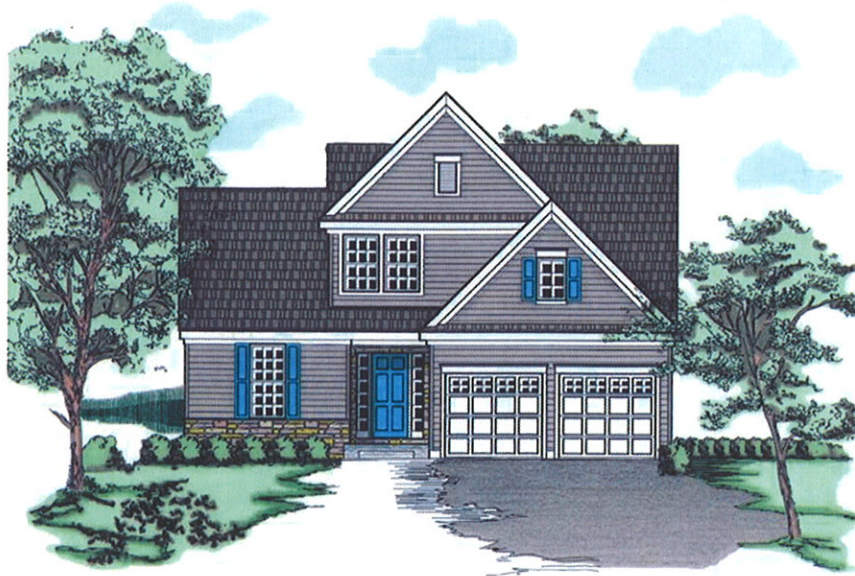


Floor plan and elevation details vary from house to house and are not necessarily built exactly as indicated above. Continuing a policy of research and development, Housewright Development, Inc. must reserve the right to make modifications in design, terms and products without notice or obligations. Room sizes are approximate. Landscaping is for display purposes only. 2005



* **Optional Sun Room**

* INDICATES OPTIONAL UPGRADE

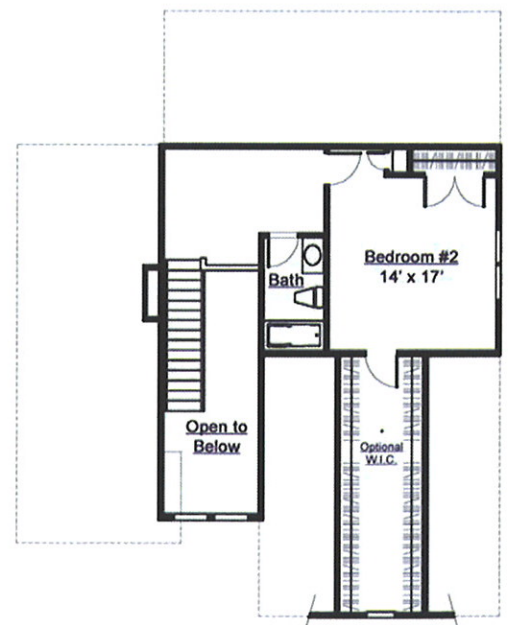
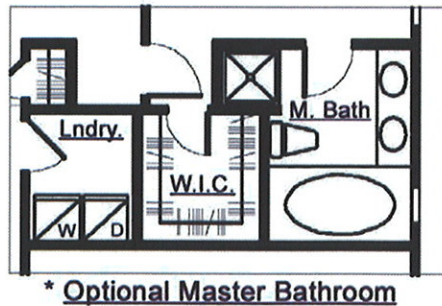


SPERRY MODEL

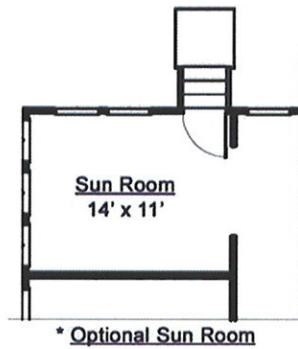
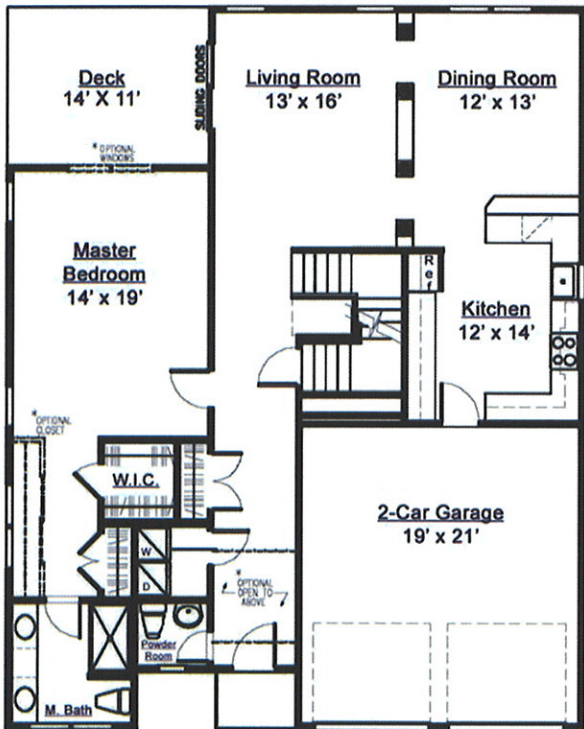
First Floor	1306 Sq. Ft.
Second Floor	428 Sq. Ft.
Total	1734 Sq. Ft.



Floor plan and elevation details vary from house to house and are not necessarily built exactly as indicated above. Continuing a policy of research and development, Housewright Development, Inc. must reserve the right to make modifications in design, terms and products without notice or obligations. Room sizes are approximate. Landscaping is for display purposes only. 2005



* INDICATES OPTIONAL UPGRADE



HAMPSHIRE GLENN

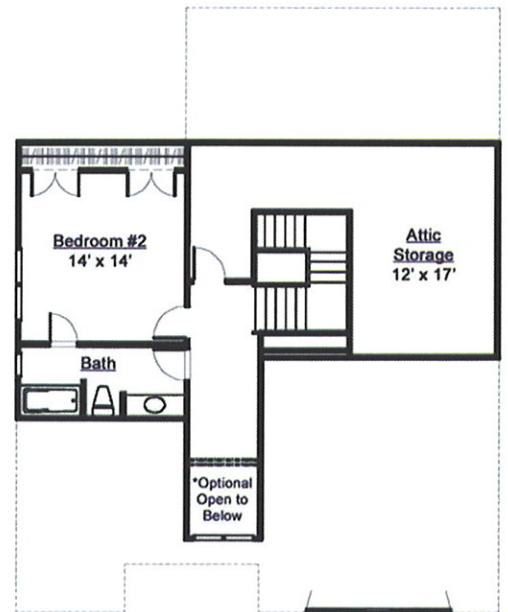
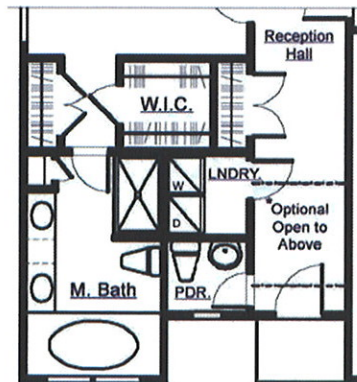
an active adult community

ALCOTT MODEL

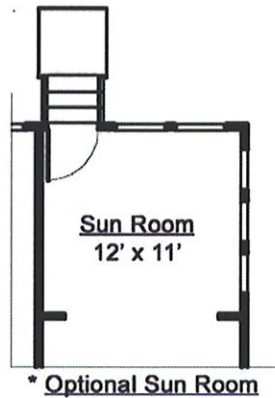
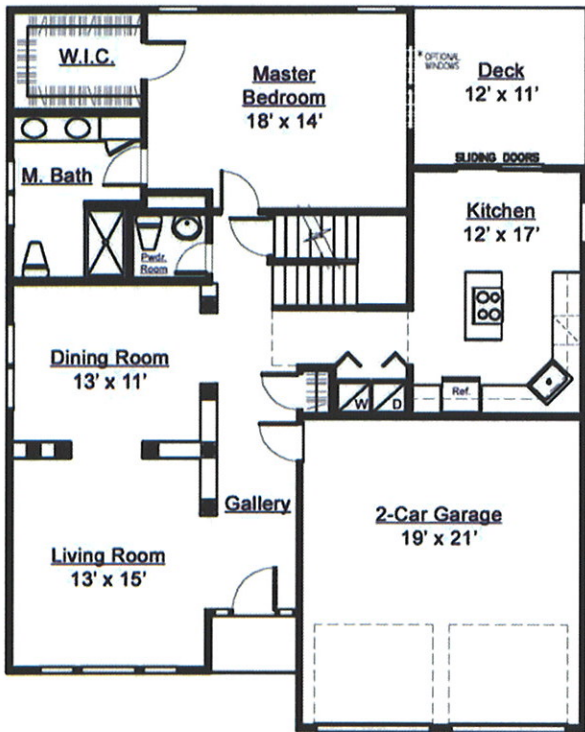
First Floor	1388 Sq. Ft.
Second Floor	461 Sq. Ft.
Total	1849 Sq. Ft.



Floor plan and elevation details vary from house to house and are not necessarily built exactly as indicated above. Continuing a policy of research and development, Housewright Development, Inc. must reserve the right to make modifications in design, terms and products without notice or obligations. Room sizes are approximate. Landscaping is for display purposes only. 2005



* INDICATES OPTIONAL UPGRADE



HAMPSHIRE GLENN
an active adult community

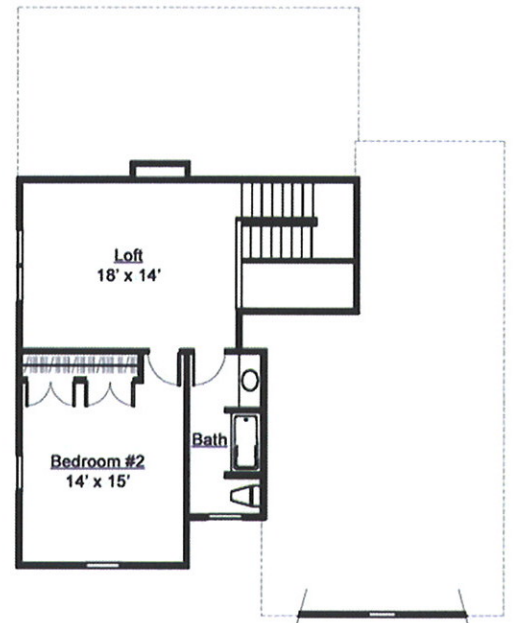
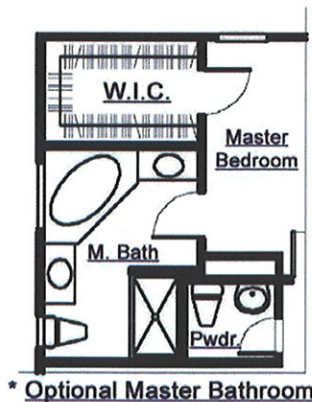
WAKELEE MODEL

First Floor	1337 Sq. Ft.
Second Floor	598 Sq. Ft.
Total	1935 Sq. Ft.



Floor plan and elevation details vary from house to house and are not necessarily built exactly as indicated above. Continuing a policy of research and development, Housewright Development, Inc. must reserve the right to make modifications in design, terms and products without notice or obligations. Room sizes are approximate. Landscaping is for display purposes only. 2005

* INDICATES OPTIONAL UPGRADE





Easy lifestyle for Active Adults

- Great location off Route 69 and Potuccos Ring Road
- Exterior maintenance including lawn, in ground irrigation, landscaping and snow removal
- Oil-fired, 2-zone, warm air heating with central air conditioning
- Public water and sewer
- Underground utilities

Impressive Exterior Design

- Stately front elevations with stone accents
- Choice of architect created color schemes
- 30 year architectural roof shingles
- Concrete sidewalk, paver walkways
- Classic coachlight style road lighting

Luxurious Interiors

- Convenient first floor master suites
- Dramatic open floor plans including great rooms
- Cozy first floor dens
- Expansive nine foot 1st floor ceilings
- Striking fully applianced kitchens
- Natural hardwood flooring

Standard features and availability of options vary by unit



SPECIFICATIONS

Utilities

- ❖ Underground utilities including cable TV
- ❖ City water and sewer

Appliances and Cabinets

- ❖ Fully applianced kitchen featuring range with self-cleaning oven, refrigerator with icemaker, dishwasher and space-saver microwave over range – all GE appliances
- ❖ Maple or oak kitchen cabinets featuring 36' overhead cabinets and crown molding
- ❖ Wood vanities (to match kitchen cabinet style) with plate glass mirrors
- ❖ Wilsonart laminated countertops in choice of colors

Plumbing & Heating

- ❖ Two zone oil warm-air heat and 50 gallon electric hot water heater. (Carter model has one zone)
- ❖ Central air conditioning
- ❖ Master bath includes white Aker one-piece fiberglass shower with glass door. Double sink vanity. (single sink vanity in Carter)
- ❖ Main bath includes white Aker one-piece fiberglass tub/shower with curtain rod
- ❖ Stainless steel, single bowl kitchen sink with single lever pull-out center spray and soap dispenser
- ❖ Pedestal sink with oval mirror in powder room
- ❖ White elongated toilets
- ❖ Laundry room or closet including washer hook-ups and dryer vents
- ❖ Frost-free faucets front and rear

Structural

- ❖ Nine foot ceilings on the first floor
- ❖ Poured concrete foundation with full basement
- ❖ Plywood construction throughout including wall and roof sheathing and sub flooring
- ❖ Tyvec or equivalent exterior house wrap
- ❖ Low maintenance vinyl tilt take out windows and sliding glass doors with internal grills with screens
- ❖ 2 car clear span garage with two insulated 8' x 7' steel garage doors and automatic garage door openers

Electrical

- ❖ 200 amp electrical service
- ❖ Hard wired smoke detectors per code
- ❖ Pre-wired telephone and cable TV outlets (3 each)
- ❖ Interior lighting purchased at CT Lighting Centers, plus 4 recessed lights and 2 switches. Exterior package provided by seller
- ❖ Exterior electrical outlets, front and rear
- ❖ Street lights

Landscaping

- ❖ Complete landscaping with finished lawns, shrubs and plantings
- ❖ Developer designed irrigation system
- ❖ Paved driveway
- ❖ Paver sidewalks to front steps
- ❖ Concrete sidewalks along street

Exterior Decorating

- ❖ Front elevation with stone accents
- ❖ Choice of architect planned exterior color schemes
- ❖ 30 year architectural roof shingles
- ❖ Easy care vinyl siding and aluminum wrapped trim
- ❖ Aluminum gutters and downspouts
- ❖ Exterior Trex deck sized per house plan

Interior Decorating

- ❖ Natural finish oak flooring in the foyer, living room, dining room, breakfast area and kitchen
- ❖ Ceramic tile flooring in the bathrooms and laundry area
- ❖ Wall to wall carpeting in the master bedroom, main staircase, second floor hall, loft and second bedroom
- ❖ Colonial six-panel painted interior doors
- ❖ Colonial 3 ½" baseboard trim and 2 ½" window and door casings
- ❖ Bright brass Schlage door knobs and hardware
- ❖ Off white flat paint on walls and semi-gloss white on trim
- ❖ Flat painted ceilings
- ❖ Vinyl-clad wire shelving in closets



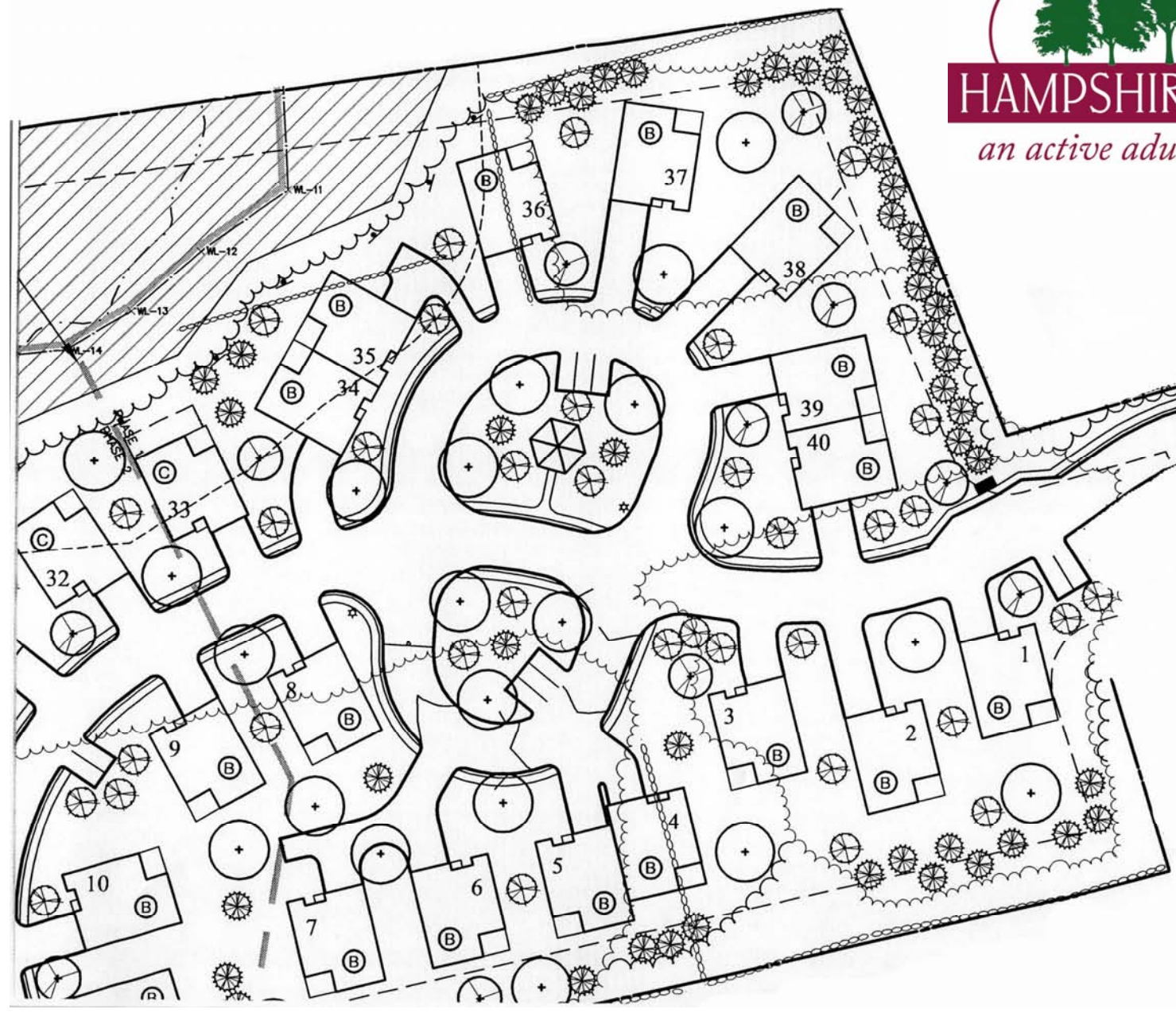
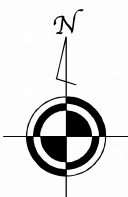
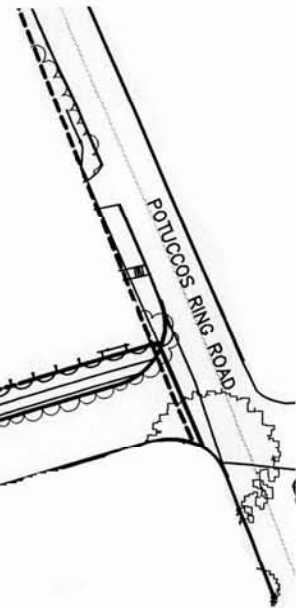
Directions:

Route 69 (Wolcott Road)
to Potuccos Ring Road
Wolcott, CT



HAMPSHIRE GLENN

an active adult community





HAMPSHIRE GLENN
an active adult community



Directions:

Route 69 (Wolcott Road)
 to Potuccos Ring Road
 Wolcott, CT



COMPOSITE SITE PLAN				Engineering, Architecture and Environmental Services MILONE & MACBROOM 99 Ruddy Drive Cheshire, Connecticut 06410 (860) 271-1173 Fax (860) 272-9133 www.miloneandmacbroom.com		1027-11 PROJECT NO.
HAMPSHIRE GLENN ACTIVE ADULT HOUSING WOLCOTT ROAD (ROUTE 69) & POTUCCOS RING ROAD WOLCOTT, CONNECTICUT				TGC TGC JMM DESIGNER REVIEWER CHECKER SCALE: 1"=50' DATE: JULY 8, 2002		3 SHEET NO.
REVISIONS: OCTOBER 24, 2000 OCTOBER 2, 2000 AUGUST 20, 2002 NOVEMBER 28, 2002 DECEMBER 28, 2002 JANUARY 24, 2003 JANUARY 30, 2003 MAY 20, 2003 OCTOBER 7, 2000						

Hampshire Glenn Directions:

From 84 East or West

Exit 28-Rt 322 Marion, Milldale. Left at end of ramp on route 322 west. At top of hill, near Rodgers Orchards go right at flashing light on route 322. Straight through stop sign to cross over Woodtick Rd and continue on route 322. Left at end on route 69 to 2nd entrance of Potuccos Ring Rd on right. Hampshire Glenn is on the left.

From Cheshire:

Route 10 to route 70 West. Right on Byam Rd (near Blackie's Restaurant). Right at stop sign to continue on Byam Rd. Left at end on Meriden Road. Right at first light on Todd Rd. At stop sign go left on Woodtick Rd. Immediately bear right on Nichols Rd. Pass Police station and go straight through stop sign. At end go Right on route 69. At 2nd light go Left on Potuccos Ring Rd. Hampshire Glenn is on the left.

From Bristol area:

Route 72 to route 69 south to 2nd entrance of Potuccos Ring Rd (on right). Hampshire Glenn is on the left.